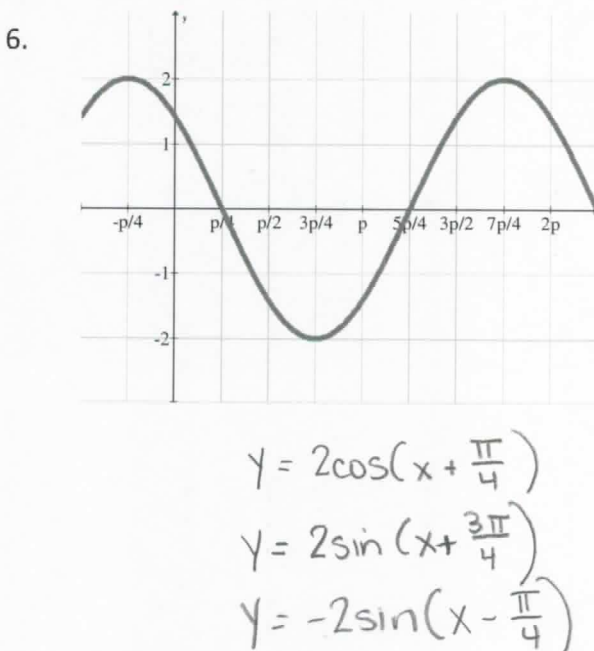
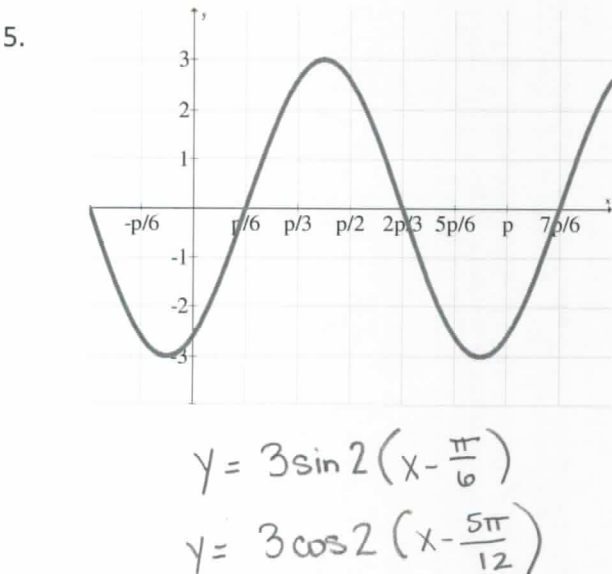
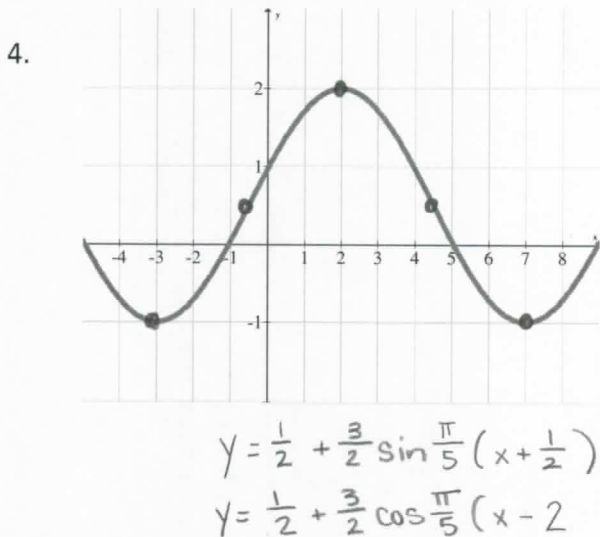
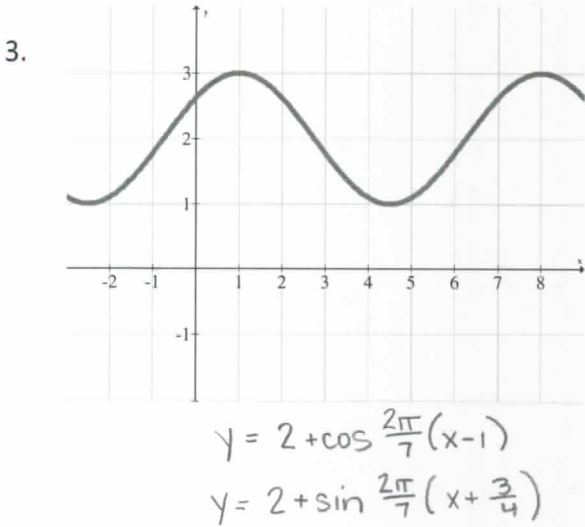
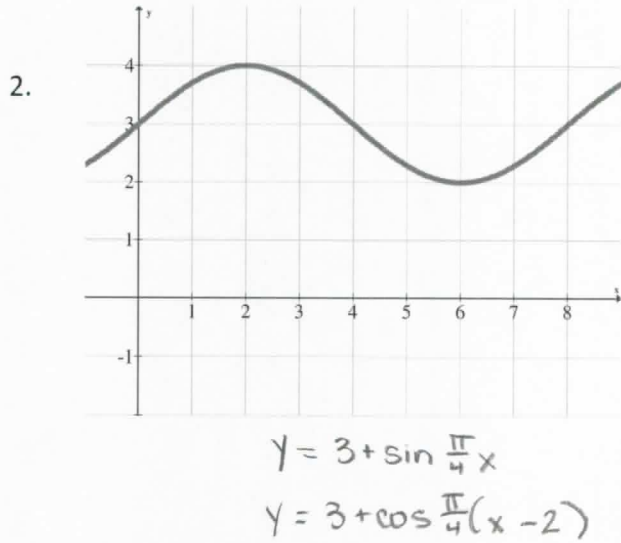
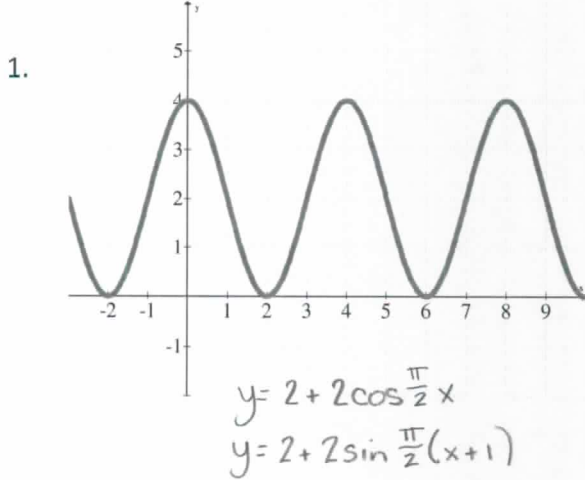


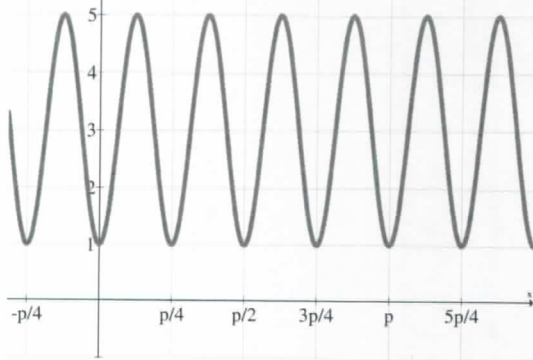
Write a sine and cosine equation from the graph.



$$y = 3 + 2 \cos 8(x - \frac{\pi}{8})$$

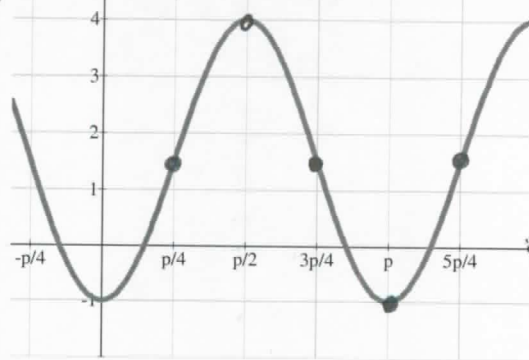
$$y = 3 + 2 \sin 8(x - \frac{\pi}{16})$$

7.



$$y = \frac{3}{2} + \frac{5}{2} \cos 2(x - \frac{\pi}{4})$$

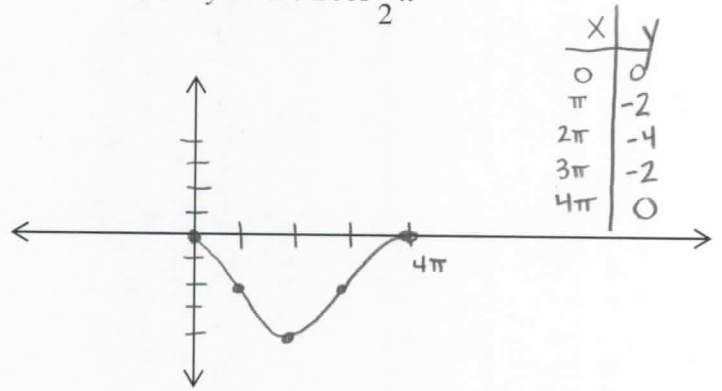
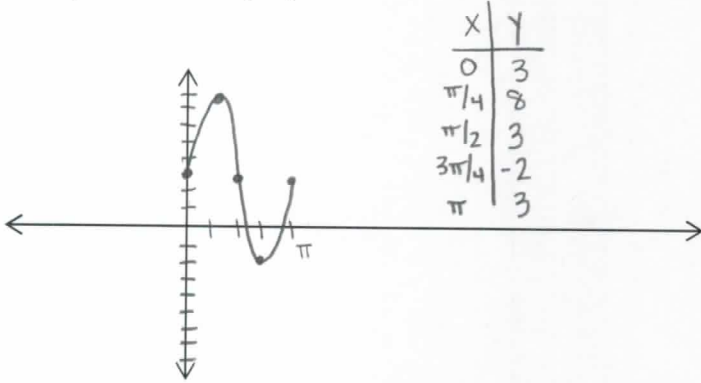
8.



Sketch the graph of each equation.

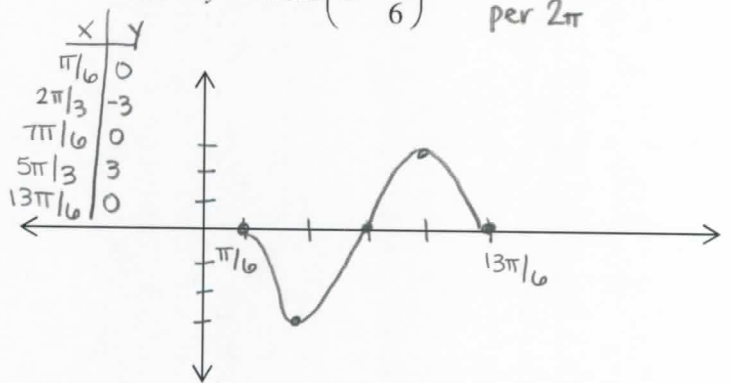
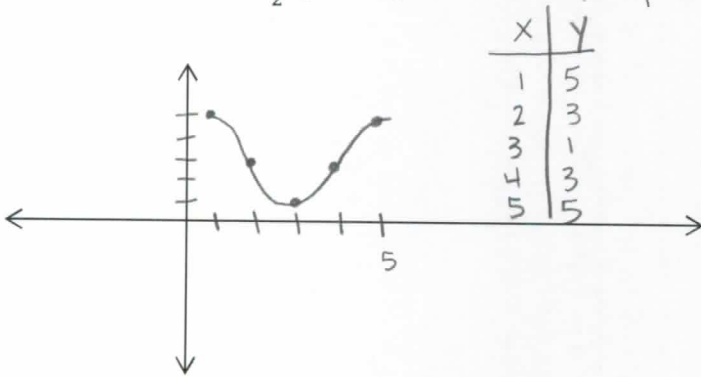
9. $y = 3 + 5 \sin(2x)$ ↑ 3 amp 5 per π

10. $y = -2 + 2 \cos \frac{1}{2}x$ ↓ 2 amp 2 per 4π



11. $y - 3 = 2 \cos \frac{\pi}{2}(x - 1)$ ↑ 3 → 1 amp 2 per 4

12. $y = -3 \sin(x - \frac{\pi}{6})$ amp 3 → $\frac{\pi}{6}$ per 2π



13. $y + 3 = 6 \sin \frac{\pi}{4}(x + 2)$ ↓ 3 ← 2 amp 6 per 8

14. $y = 4 - 4 \cos 2(x - \pi)$ ↑ 4 → π per π amp 4

